

SALVATION ARMY INFRASTRUCTURE STUDY

CHIKANKATA, ZAMBIA

MAY, 2017

eMi PROJECT #5690



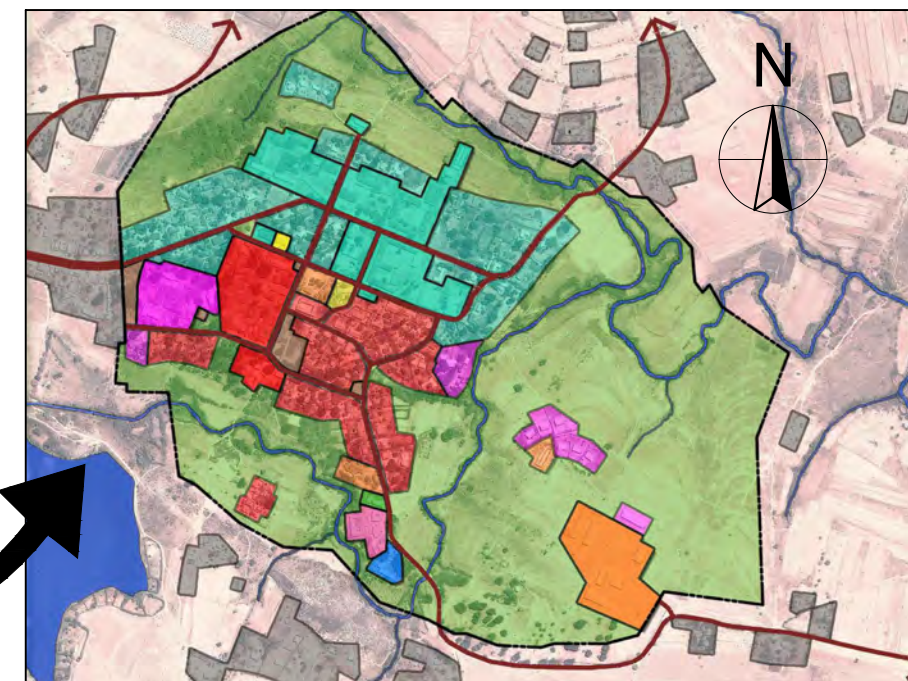
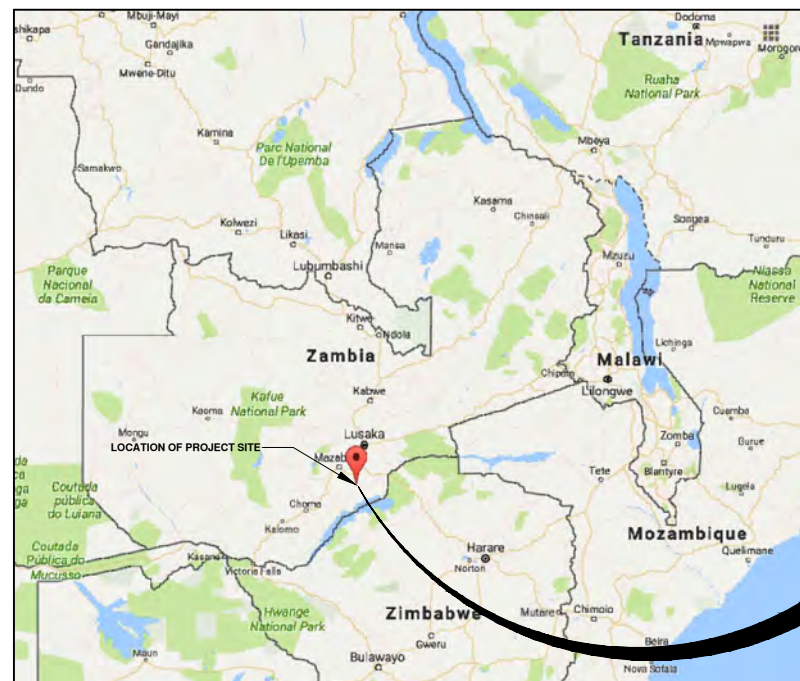
ENGINEERING MINISTRIES INTERNATIONAL
130 E. KIOWA ST., SUITE 200
COLORADO SPRINGS, CO 80903
WWW.EMIWORLD.ORG



SALVATION ARMY CHIKANKATA MISSION
CHIKANKATA, ZAMBIA
WWW.SALVATIONARMY.ORG

DRAWING LIST

CS-0	COVER SHEET
MASTER PLAN	
M-0	EXISTING BUILDING LEGEND PLAN
M-0.1	EXISTING SITE PLAN
M-0.2	BIOMEDICAL EXPANSION CAMPUS
M-0.3	SECONDARY SCHOOL AND RADIO STATION
M-0.4	HOSPITAL AND MISCELLANEOUS AREAS
M-0.5	NURSING COLLEGE AND WATER TREATMENT PLANT
M-1	EXISTING SITE LAND USE
M-2	PROPOSED SITE GROWTH PLAN
SITE	
C-0	EXISTING WATER DISTRIBUTION PLAN
C-1	WATER TREATMENT PLANT LAYOUT
C-2	PROPOSED WATER STORAGE IMPROVEMENT PLAN
ELECTRICAL	
E-0	EXISTING ELECTRICAL DISTRIBUTION PLAN
E-0.1	PROPOSED ELECTRICAL DISTRIBUTION PLAN
E-1	EXISTING SITE ELECTRICAL SINGLE-LINE DIAGRAM
E-1.1	EXISTING SITE ELECTRICAL SINGLE-LINE DIAGRAM (CONT.)
E-2	PROPOSED FUTURE ELECTRICAL SINGLE -LINE DIAGRAM
E-2.1	PROPOSED FUTURE ELECTRICAL SINGLE-LINE DIAGRAM (CONT.)
E-2.2	PROPOSED IMMEDIATE CHANGES ELECTRICAL SINGLE-LINE DIAGRAM
E-2.3	PROPOSED IMMEDIATE CHANGES ELECTRICAL SINGLE-LINE DIAGRAM (CONT.)
STRUCTURAL	
S-0	TYPICAL STRUCTURAL BUILDING SECTION



Z:\Projects\Zambia\5690 Salvation Army Infrastructure Study\Drawings\Site\GO.1 Coversheet 5690 Army Infrastructure Study.dwg, 5/9/2017 9:41:37 AM, DWG To PDF.pc3

CHIKANKATA SALVATION ARMY INFRASTRUCTURE STUDY

CHIKANKATA MISSION, ZAMBIA

COVER SHEET

CONCEPTUAL DRAWINGS
NOT FOR CONSTRUCTION

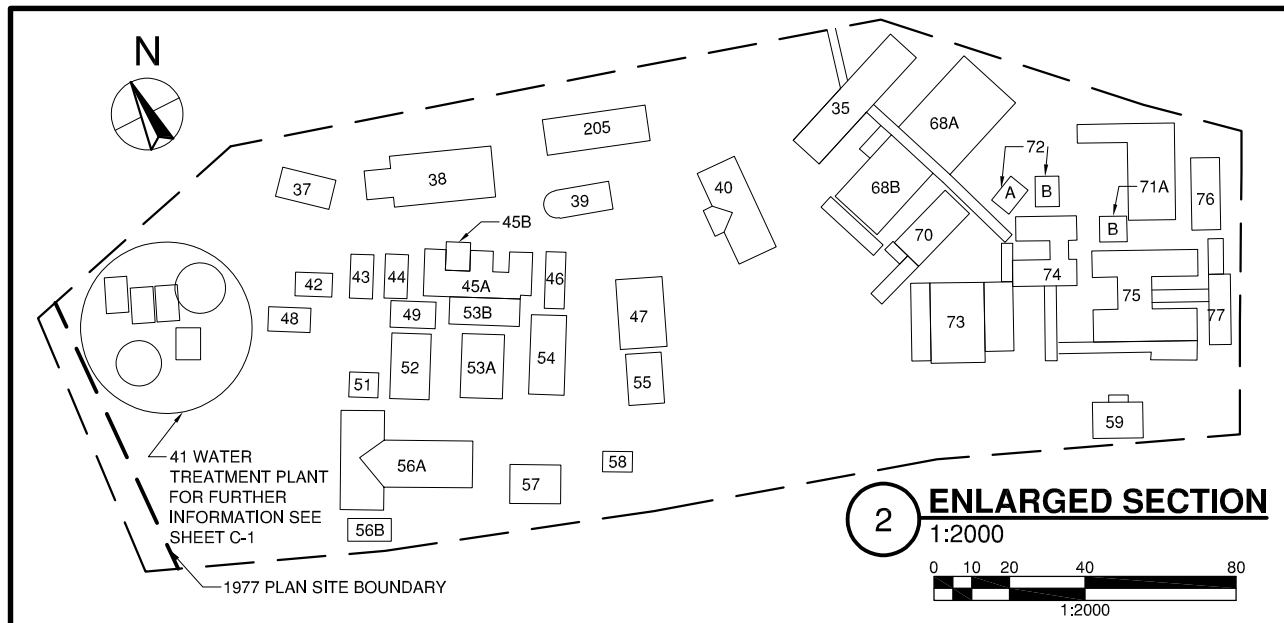
LOCAL REGULATIONS MAY REQUIRE DRAWINGS TO BE FINALIZED BY AN ARCHITECT/ENGINEER LICENSED TO PRACTICE IN COUNTRY

PROJECT: #5690

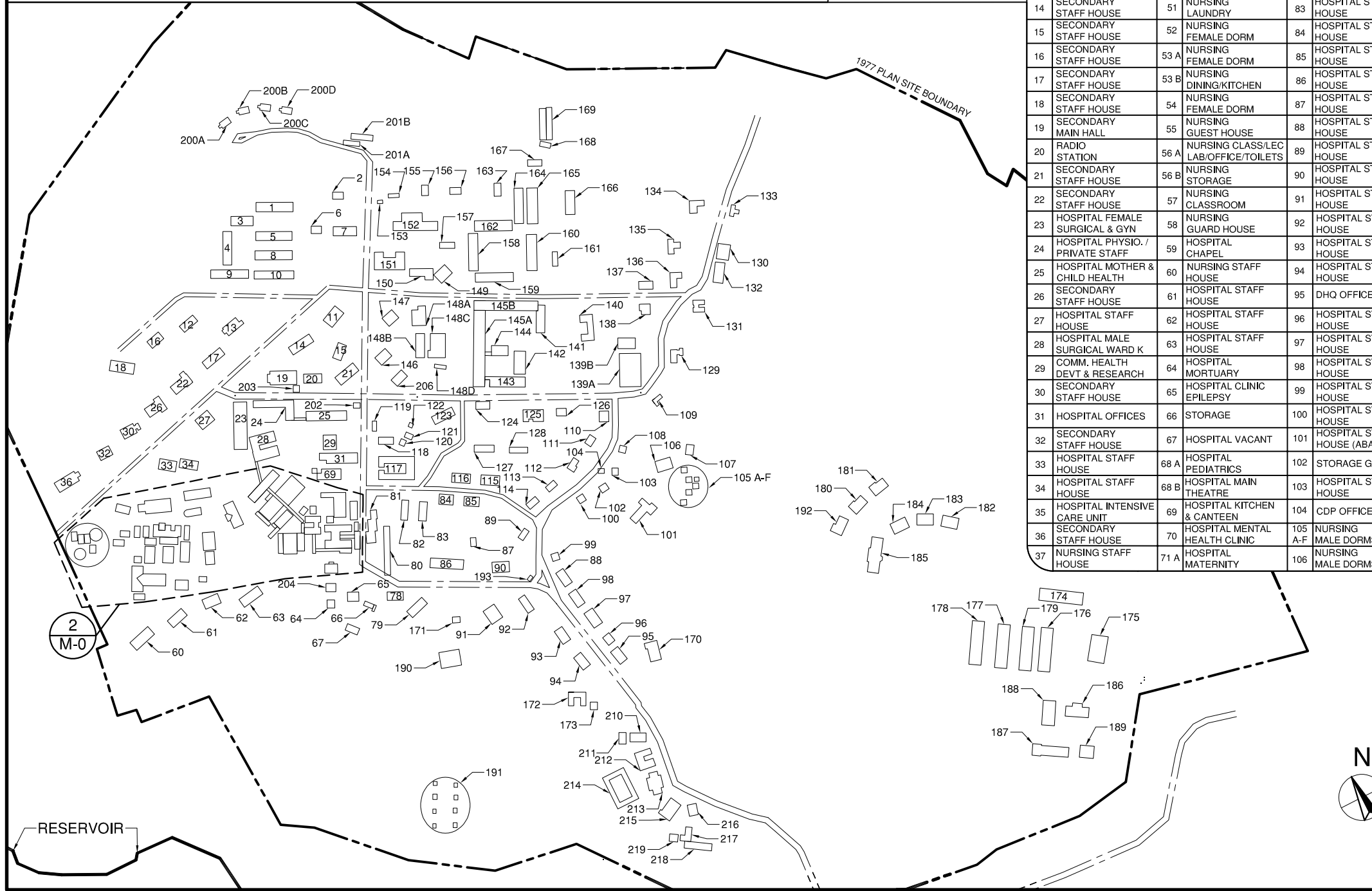
DATE ISSUED: MAY 2017

REVISIONS:

SHEET NUMBER
CS-0



2 ENLARGED SECTION
1:2000



1 EXISTING BUILDING LEGEND PLAN
1:5000

EXISTING BUILDING LEGEND									
#	DESCRIPTION	#	DESCRIPTION	#	DESCRIPTION	#	DESCRIPTION	#	DESCRIPTION
1	SECONDARY FEMALE DORM	38	NURSING FEMALE DORM	71 B	HOSPITAL CONSULT MED & PEDIATRICS	107	PIGGERY	143	SECONDARY LAB
2	SECONDARY STAFF HOUSE	39	NURSING MALE DORM	72 A	HOSPITAL BOARD ROOM	108	HOSPITAL STAFF HOUSE	144	SECONDARY CLASSROOM
3	SECONDARY REC./LAUNDRY	40	NURSING ADMIN	72 B	HOSPITAL LAB	109	HOSPITAL STAFF HOUSE	145A	SECONDARY COMPUTER LAB
4	SECONDARY FEMALE DORM	41	WATER TREATMENT PLANT	73	HOSPITAL (HAHC) ADMISSION WARD	110	HOSPITAL STAFF HOUSE	145B	SECONDARY MAIN CLASSROOM
5	SECONDARY FEMALE DORM	42	NURSING FEMALE DORM	74	HOSPITAL LAB	111	HOSPITAL STAFF HOUSE	146	SECONDARY STAFF HOUSE
6	SECONDARY STAFF HOUSE	43	NURSING FEMALE DORM	75	HOSPITAL RADIO, EYE CLINIC/THEATRE	112	HOSPITAL STAFF HOUSE	147	SECONDARY STAFF HOUSE
7	SEC. HOME EC CLASSROOM	44	NURSING FEMALE DORM	76	HOSPITAL ADMINISTRATION	113	HOSPITAL STAFF HOUSE	148A	SECONDARY COMPUTER LAB
8	SECONDARY FEMALE DORM	45 A	NURSING FEMALE DORM	77	HOSPITAL PHARMACY	114	HOSPITAL STAFF HOUSE	148B	SECONDARY STORAGE/ TOOLS
9	SECONDARY FEMALE DORM	45 B	NURSING COLD ROOM	78	HOSPITAL HARD	115	HOSPITAL STAFF HOUSE	148C	SECONDARY WORKSHOP
10	SECONDARY FEMALE DORM	46	NURSING MALE DORM	79	HOSPITAL SUP. HOUSE	116	HOSPITAL STAFF HOUSE	148D	SECONDARY TUCK SHOP
11	SEC. HEADMASTER HOUSE	47	NURSING MIDWIFERY CLASS/LAB/OFFICE	80	HOSPITAL LAUNDRY BLOCK YARD	117	HOSPITAL STAFF HOUSE	149	SECONDARY CLASSROOM/LECT.
12	SECONDARY STAFF HOUSE	48	NURSING FEMALE DORM	81	HOSPITAL MAINT. HR OFFICE	118	BIO MED DORMS	150	SECONDARY LIBRARY
13	SECONDARY STAFF HOUSE	49	NURSING TOILET/SHOWER	82	HOSPITAL STAFF HOUSE	119	BIO MED DORMS	151	SECONDARY TOP (AP) CLASSROOM
14	SECONDARY STAFF HOUSE	51	NURSING LAUNDRY	83	HOSPITAL STAFF HOUSE	120	BIO MED DORMS	152	SECONDARY DINING KITCHEN/ DINING
15	SECONDARY STAFF HOUSE	52	NURSING FEMALE DORM	84	HOSPITAL STAFF HOUSE	121	BIO MED DORMS	153	SECONDARY CONC. SLAB ONLY
16	SECONDARY STAFF HOUSE	53 A	NURSING FEMALE DORM	85	HOSPITAL STAFF HOUSE	122	BIO MED DORMS	154	SECONDARY STAFF HOUSE
17	SECONDARY STAFF HOUSE	53 B	NURSING DINING/KITCHEN	86	HOSPITAL STAFF HOUSE	123	RADIO STATION MANAGER HOUSE	155	SECONDARY STAFF HOUSE
18	SECONDARY STAFF HOUSE	54	NURSING FEMALE DORM	87	HOSPITAL STAFF HOUSE	124	HOSPITAL TOILETS	156	SECONDARY STAFF HOUSE
19	SECONDARY MAIN HALL	55	NURSING GUEST HOUSE	88	HOSPITAL STAFF HOUSE	125	HOSPITAL STAFF HOUSE	157	SECONDARY MATTRESS STORAGE
20	RADIO STATION	56 A	NURSING CLASS/LEC LAB/OFFICE/TOILETS	89	HOSPITAL STAFF HOUSE	126	HOSPITAL STAFF HOUSE	158	SECONDARY MALE DORM
21	SECONDARY STAFF HOUSE	56 B	NURSING STORAGE	90	HOSPITAL STAFF HOUSE	127	HOSPITAL STAFF HOUSE	159	SECONDARY MALE DORM
22	SECONDARY STAFF HOUSE	57	NURSING CLASSROOM	91	HOSPITAL STAFF HOUSE	128	HOSPITAL STAFF HOUSE	160	SECONDARY MALE DORM
23	HOSPITAL FEMALE SURGICAL & GYN	58	NURSING GUARD HOUSE	92	HOSPITAL STAFF HOUSE	129	SECONDARY STAFF HOUSE	161	SECONDARY MALE TOILETS
24	HOSPITAL PHYSIO. / PRIVATE STAFF	59	HOSPITAL CHAPEL	93	HOSPITAL STAFF HOUSE	130	SECONDARY STAFF HOUSE	162	SECONDARY MALE DORM
25	HOSPITAL MOTHER & CHILD HEALTH	60	NURSING STAFF HOUSE	94	HOSPITAL STAFF HOUSE	131	SECONDARY STAFF HOUSE	163	SECONDARY MALE TOILETS/ SHOWERS
26	SECONDARY STAFF HOUSE	61	HOSPITAL STAFF HOUSE	95	DHQ OFFICES	132	SECONDARY STAFF HOUSE	164	SECONDARY MALE DORM - NO WATER
27	HOSPITAL STAFF HOUSE	62	HOSPITAL STAFF HOUSE	96	HOSPITAL STAFF HOUSE	133	SECONDARY STAFF HOUSE	165	SECONDARY MALE DORM
28	HOSPITAL MALE SURGICAL WARD K	63	HOSPITAL STAFF HOUSE	97	HOSPITAL STAFF HOUSE	134	SECONDARY STAFF HOUSE	166	SECONDARY STAFF HOUSE
29	COMM. HEALTH DEVT & RESEARCH	64	HOSPITAL MORTUARY	98	HOSPITAL STAFF HOUSE	135	SECONDARY STAFF HOUSE	167	SLAUGHTER HOUSE (SEC AREA)
30	SECONDARY STAFF HOUSE	65	HOSPITAL CLINIC EPILEPSY	99	HOSPITAL STAFF HOUSE	136	SECONDARY STAFF HOUSE	168	PIGGERY RUINS (SEC AREA)
31	HOSPITAL OFFICES	66	STORAGE	100	HOSPITAL STAFF HOUSE	137	SECONDARY STAFF HOUSE	169	PIGGERY/ SLGHTER (SEC AREA)
32	SECONDARY STAFF HOUSE	67	HOSPITAL VACANT	101	HOSPITAL STAFF HOUSE (ABANDON)	138	SECONDARY STAFF HOUSE	170	HOSPITAL DHQ 2
33	HOSPITAL STAFF HOUSE	68 A	HOSPITAL PEDIATRICS	102	STORAGE GARAGE	139A	STORAGE (SEC AREA)	171	HOSPITAL STAFF HOUSE
34	HOSPITAL STAFF HOUSE	68 B	HOSPITAL MAIN THEATRE	103	HOSPITAL STAFF HOUSE	139B	SWIMMING POOL (ABANDONED)	172	BIO MED DORMS (HOSPITAL AREA)
35	HOSPITAL INTENSIVE CARE UNIT	69	HOSPITAL KITCHEN & CANTEEN	104	CDP OFFICE	140	SECONDARY GUEST HOUSE	173	BIO MED DORMS (HOSPITAL AREA)
36	SECONDARY STAFF HOUSE	70	HOSPITAL MENTAL HEALTH CLINIC	105 A-F	NURSING MALE DORMS	141	SECONDARY CLASSROOM	174	BIO MED MALE DORMS
37	NURSING STAFF HOUSE	71 A	HOSPITAL MATERNITY	106	NURSING MALE DORMS	142	SECONDARY LAB	175	BIO MED KITCHEN/ DINING
								176	BIO MED FEMALE DORMS
								177	BIO MED MALE DORMS
								178	BIO MED MALE DORMS
								179	BIO MED FEMALE DORM UNDER CONST.
								180	BIO MED MALE DORMS
								181	NURSING STAFF HOUSE
								182	NURSING STAFF HOUSE
								183	NURSING STAFF HOUSE
								184	NURSING STAFF HOUSE
								185	BIO MED MISSION HOUSE
								186	BIO MED LIBRARY
								187	BIO MED DEMONSTRATION LAB
								188	BIO MED CLASSROOM
								189	BIOMED CLASS/LECT UNDER CONST.
								190	HOSPITAL CONC. SLAB ONLY
								191	HOSPITAL STAFF VILLAGE (8 HOUSES)
								192	NURSING STAFF HOUSE
								193	RESIDENTIAL GENERATOR
								200A	SECONDARY STAFF HOUSE
								200B	SECONDARY STAFF HOUSE
								200C	SECONDARY STAFF HOUSE
								200D	SECONDARY STAFF HOUSE
								201A	SECONDARY CHICKEN COOP
								201B	SECONDARY CHICKEN COOP
								202	HOSPITAL GENERATOR
								203	SECONDARY TOILETS
								204	HOSPITAL MOURNING CENTER
								205	NURSING CLASS/LIBRARY
								206	MISSION DIRECTOR RESIDENCE
								210	CHURCH
								211	CHURCH OFFICES
								212	SEMINAR CENTER HOUSING
								213	SEMINAR CENTER MEETING ROOM
								214	SEMINAR CENTER HOUSING
								215	SEMINAR CENTER KITCHEN/DINING
								216	ELEMENTARY BUILDING
								217	ELEMENTARY BUILDING
								218	ELEMENTARY BUILDING
								219	ELEMENTARY BUILDING

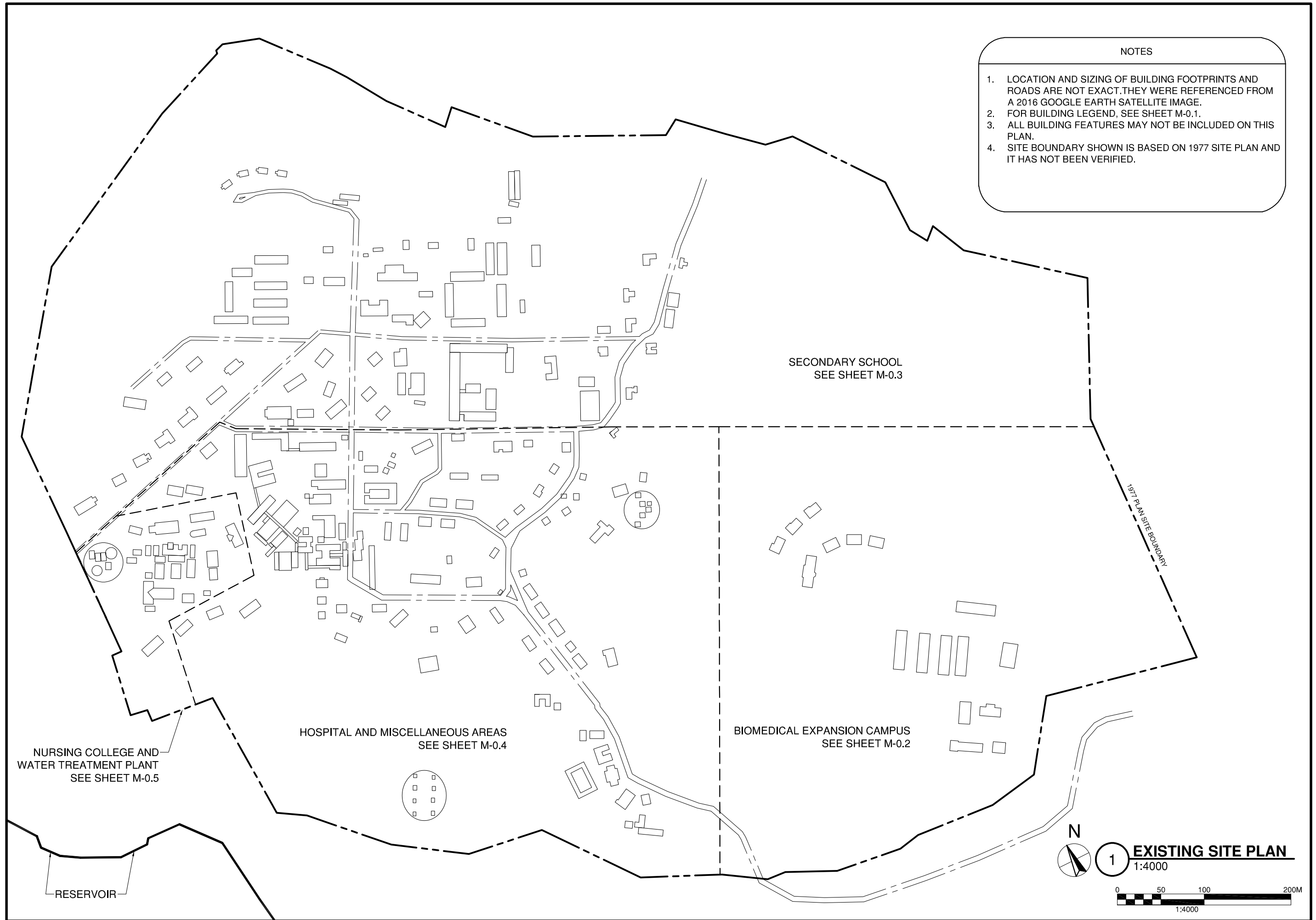
CHIKANKATA SALVATION ARMY INFRASTRUCTURE STUDY
CHIKANKATA MISSION, ZAMBIA
EXISTING BUILDING LEGEND PLAN

CONCEPTUAL DRAWINGS NOT FOR CONSTRUCTION
LOCAL REGULATIONS MAY REQUIRE DRAWINGS TO BE FINALIZED BY AN ARCHITECT/ENGINEER LICENSED TO PRACTICE IN COUNTRY

PROJECT: #5690
DATE ISSUED: MAY 2017
REVISIONS:

SHEET NUMBER **M-0**





- NOTES
1. LOCATION AND SIZING OF BUILDING FOOTPRINTS AND ROADS ARE NOT EXACT.THEY WERE REFERENCED FROM A 2016 GOOGLE EARTH SATELLITE IMAGE.
 2. FOR BUILDING LEGEND, SEE SHEET M-0.1.
 3. ALL BUILDING FEATURES MAY NOT BE INCLUDED ON THIS PLAN.
 4. SITE BOUNDARY SHOWN IS BASED ON 1977 SITE PLAN AND IT HAS NOT BEEN VERIFIED.

CHIKANKATA SALVATION ARMY INFRASTRUCTURE STUDY
CHIKANKATA MISSION, ZAMBIA
EXISTING SITE PLAN

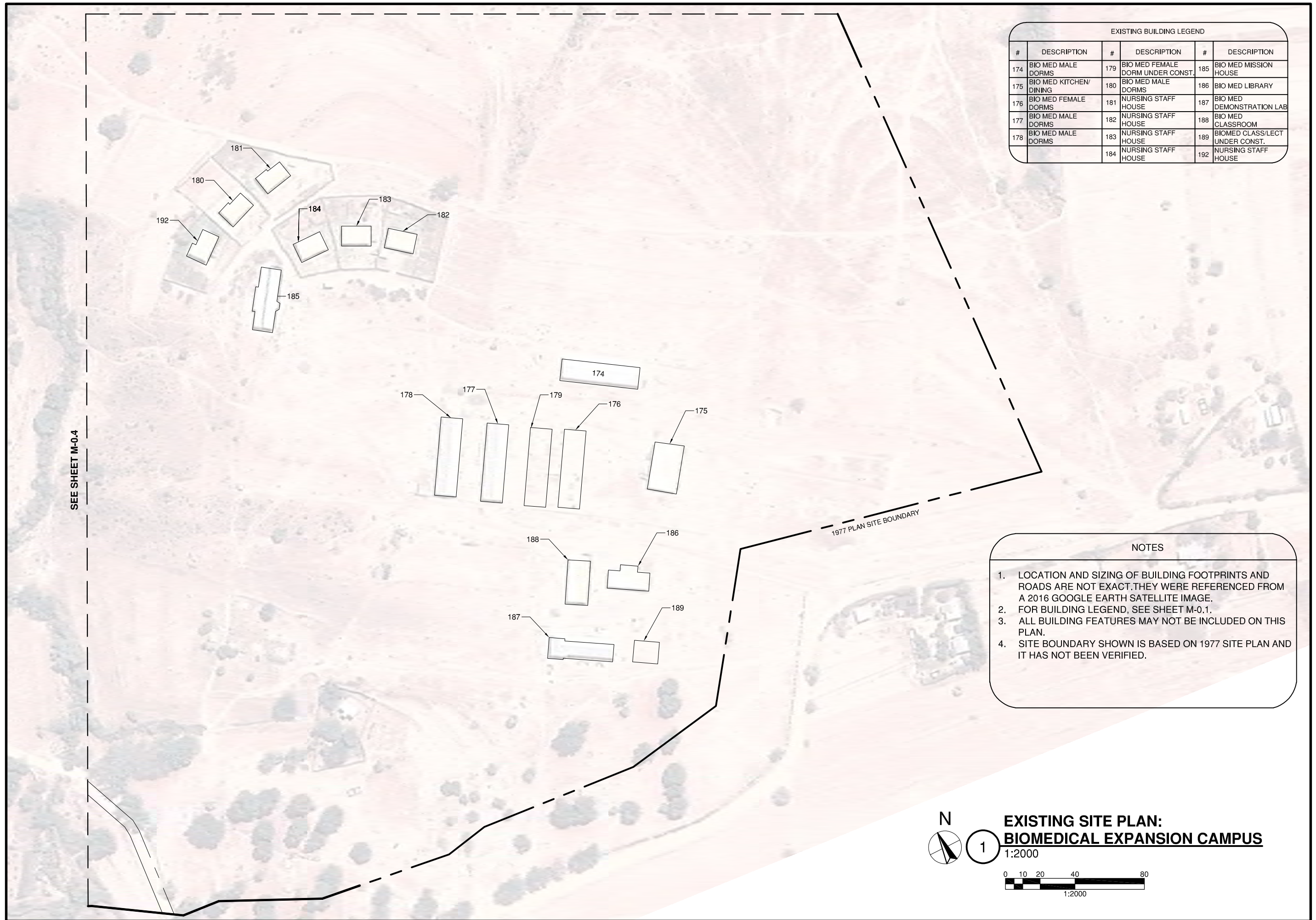
CONCEPTUAL DRAWINGS NOT FOR CONSTRUCTION
LOCAL REGULATIONS MAY REQUIRE DRAWINGS TO BE FINALIZED BY AN ARCHITECT/ENGINEER LICENSED TO PRACTICE IN COUNTRY

PROJECT: #5690
 DATE ISSUED: MAY 2017
 REVISIONS:

1 EXISTING SITE PLAN
 1:4000

0 50 100 200M
 1:4000

SHEET NUMBER
M-0.1



SEE SHEET M-0.4

1977 PLAN SITE BOUNDARY

EXISTING BUILDING LEGEND

#	DESCRIPTION	#	DESCRIPTION	#	DESCRIPTION
174	BIO MED MALE DORMS	179	BIO MED FEMALE DORM UNDER CONST.	185	BIO MED MISSION HOUSE
175	BIO MED KITCHEN/ DINING	180	BIO MED MALE DORMS	186	BIO MED LIBRARY
176	BIO MED FEMALE DORMS	181	NURSING STAFF HOUSE	187	BIO MED DEMONSTRATION LAB
177	BIO MED MALE DORMS	182	NURSING STAFF HOUSE	188	BIO MED CLASSROOM
178	BIO MED MALE DORMS	183	NURSING STAFF HOUSE	189	BIOMED CLASS/LECT UNDER CONST.
		184	NURSING STAFF HOUSE	192	NURSING STAFF HOUSE

NOTES

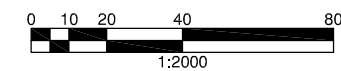
1. LOCATION AND SIZING OF BUILDING FOOTPRINTS AND ROADS ARE NOT EXACT. THEY WERE REFERENCED FROM A 2016 GOOGLE EARTH SATELLITE IMAGE.
2. FOR BUILDING LEGEND, SEE SHEET M-0.1.
3. ALL BUILDING FEATURES MAY NOT BE INCLUDED ON THIS PLAN.
4. SITE BOUNDARY SHOWN IS BASED ON 1977 SITE PLAN AND IT HAS NOT BEEN VERIFIED.



1

**EXISTING SITE PLAN:
BIOMEDICAL EXPANSION CAMPUS**

1:2000



CHIKANKATA SALVATION ARMY INFRASTRUCTURE STUDY

CHIKANKATA MISSION, ZAMBIA

EXISTING SITE PLAN: BIOMEDICAL EXPANSION CAMPUS

CONCEPTUAL DRAWINGS NOT FOR CONSTRUCTION

LOCAL REGULATIONS MAY REQUIRE DRAWINGS TO BE FINALIZED BY AN ARCHITECT/ENGINEER LICENSED TO PRACTICE IN COUNTRY

PROJECT: #5690

DATE ISSUED: MAY 2017
















REVISIONS:

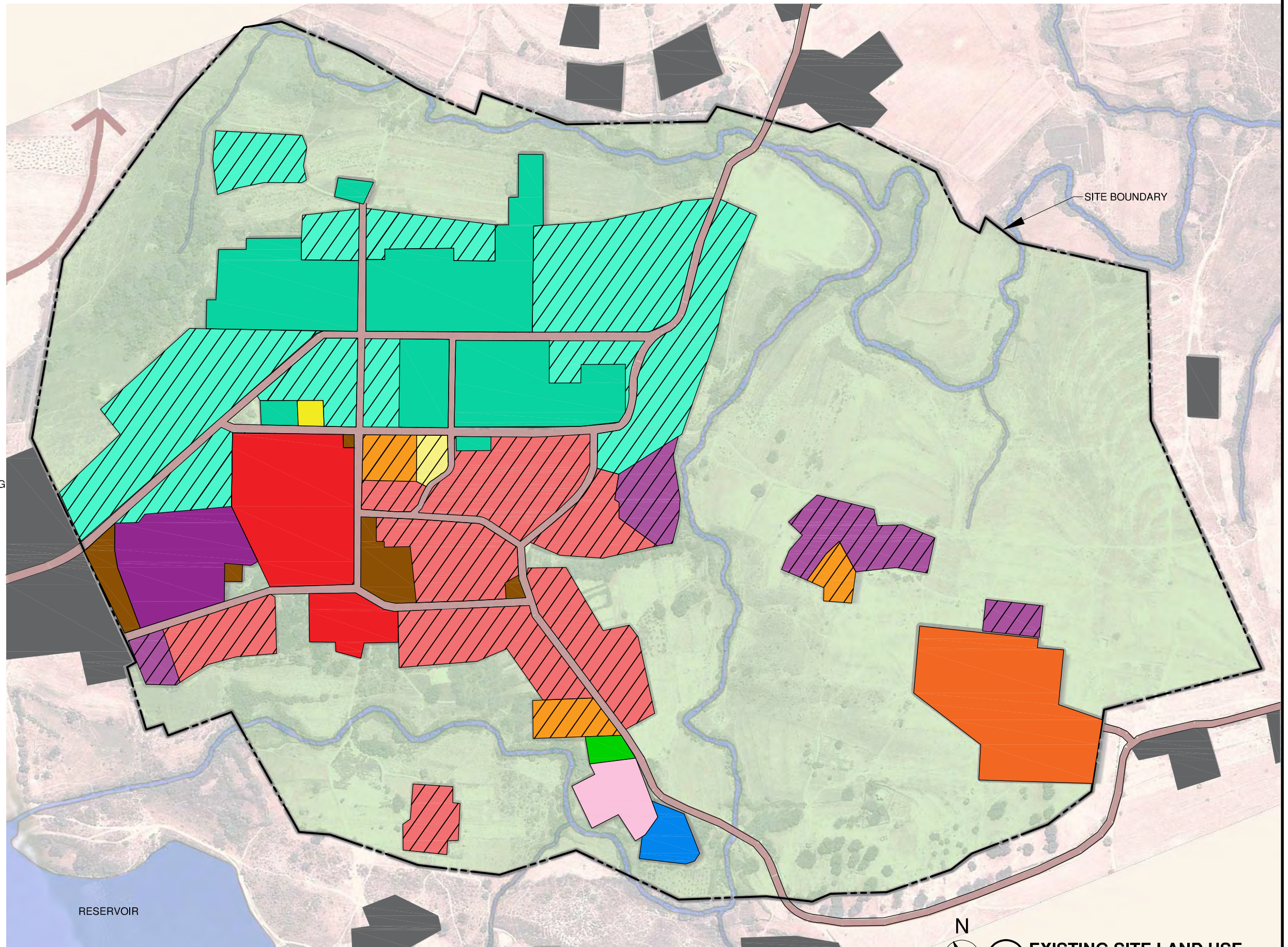
SHEET NUMBER

M-0.2

Z:\Projects\Zambia\690 Salvation Army Infrastructure Study\Drawings\Site\M-C1 Proposed Site Growth Plan 5690.dwg, Site land use, 5/5/2017 3:07:31 PM, PDFCreator

SECTOR LEGEND:

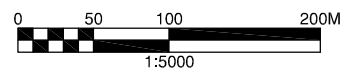
-  BIOMED. EXPANSION CAMPUS
-  BIOMED. EXPANSION CAMPUS HOUSING
-  COLLEGE OF NURSING
-  COLLEGE OF NURSING HOUSING
-  HOSPITAL
-  HOSPITAL HOUSING
-  RADIO STATION
-  RADIO STATION HOUSING
-  SECONDARY SCHOOL
-  SECONDARY SCHOOL HOUSING
-  CHURCH
-  SEMINAR CENTER
-  PRIMARY SCHOOL
-  SERVICE/MAINTENANCE
-  DEVELOPED ADJACENT PROPERTIES



1

EXISTING SITE LAND USE

1:5000



CHIKANKATA SALVATION ARMY INFRASTRUCTURE STUDY

CHIKANKATA MISSION, ZAMBIA
EXISTING SITE LAND USE

CONCEPTUAL
DRAWINGS
NOT FOR
CONSTRUCTION

LOCAL REGULATIONS MAY
REQUIRE DRAWINGS TO
BE FINALIZED BY AN
ARCHITECT/ENGINEER
LICENSED TO PRACTICE
IN COUNTRY

PROJECT:
#5690

DATE ISSUED:
MAY 2017

REVISIONS:

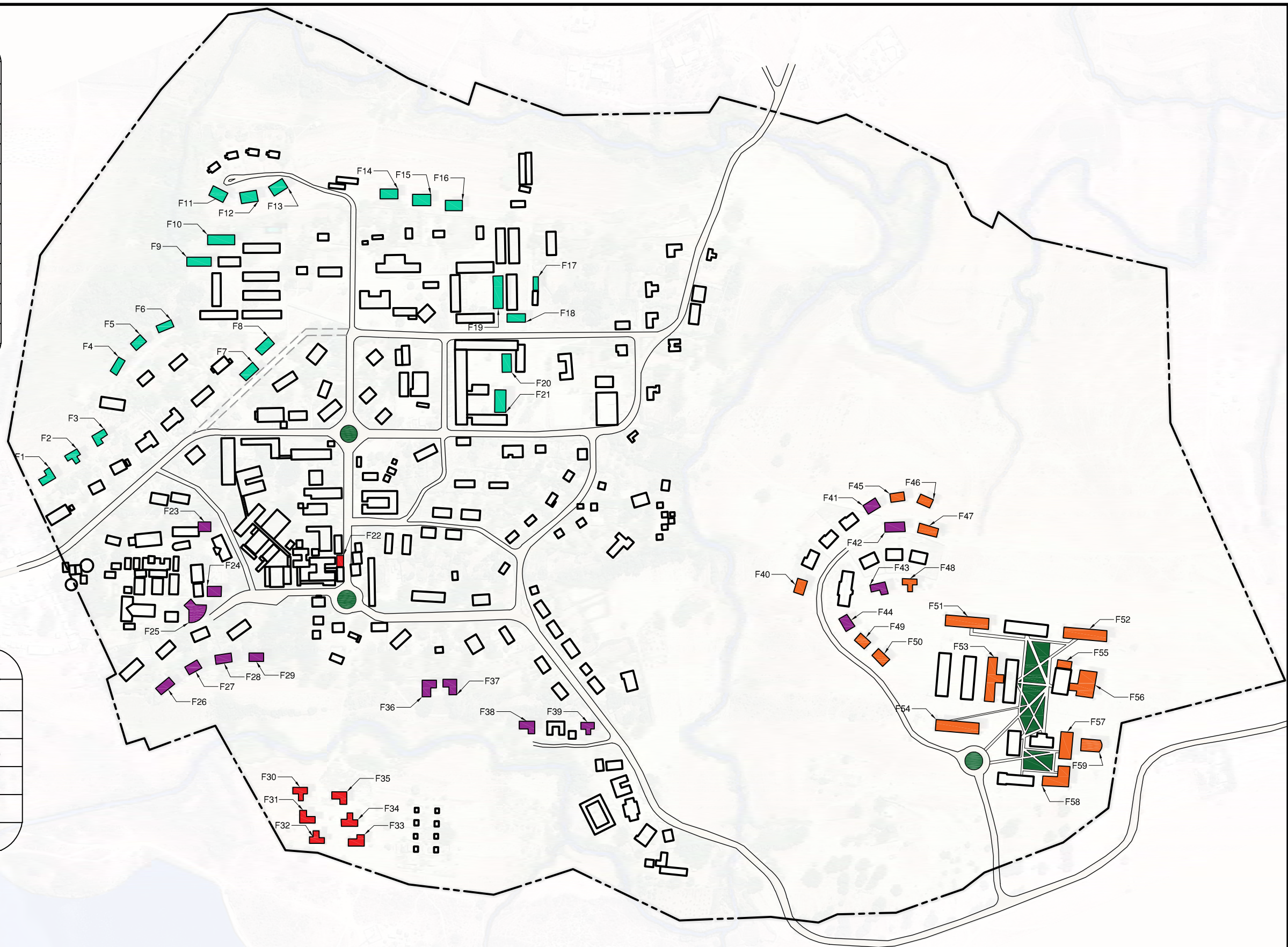
SHEET NUMBER

M-1

POTENTIAL FUTURE BUILDINGS			
#	DESCRIPTION	#	DESCRIPTION
F 1-3	SECONDARY SINGLE FAMILY UNITS	F 36-39	NURSING HOUSING UNITS
F 4-8	SECONDARY DUPLEX UNITS	F 40	BIOMED DUPLEX HOUSING UNIT
F 9-10	SECONDARY GIRLS DORMS	F 41-42	NURSING DUPLEX HOUSING UNITS
F 11-16	SECONDARY STAFF DUPLEX HOUSING	F 43	NURSING SINGLE FAMILY UNIT
F 17	SECONDARY BOYS ABLUTION BLOCK	F 44	NURSING DUPLEX HOUSING UNIT
F 18-19	SECONDARY BOYS DORM	F 45-47	BIOMED DUPLEX HOUSING UNITS
F 20	THREE SECONDARY CLASSROOMS	F 48	BIOMED SINGLE FAMILY UNIT
F 21	RENOVATED SECONDARY LAB	F 49-50	BIOMED DUPLEX HOUSING UNIT
F 22	ADDITION TO PHARMACY	F 51-54	BIOMED STUDENT DORMS
F 23-24	NURSING CLASSROOM	F 55	BIOMED DINING HALL ADDITION
F 25	NURSING LECTURE HALL	F 56	BIOMED DINING/ KITCHEN ADDITION
F 26-29	NURSING DUPLEX HOUSING	F 57-58	BIOMED CLASSROOMS
F 30-35	HOSPITAL HOUSING UNITS	F 59	BIOMED LECTURE HALL

SECTOR LEGEND	
SYMBOL	DESCRIPTION
	BIOMED. EXPANSION CAMPUS
	COLLEGE OF NURSING
	HOSPITAL
	SECONDARY SCHOOL
	OPEN GREEN SPACE

LEGEND	
SYMBOL	DESCRIPTION
	PROPERTY BOUNDARY
	PROPOSED PATH/ROAD
	EXISTING BUILDINGS
	PROPOSED NEW BUILDINGS
	DEMOLISHED ROAD



1
PROPOSED SITE GROWTH PLAN
 1:5000

1:5000

CHIKANKATA SALVATION ARMY INFRASTRUCTURE STUDY
 CHIKANKATA MISSION, ZAMBIA
 PROPOSED SITE GROWTH PLAN

CONCEPTUAL DRAWINGS NOT FOR CONSTRUCTION
LOCAL REGULATIONS MAY REQUIRE DRAWINGS TO BE FINALIZED BY AN ARCHITECT/ENGINEER LICENSED TO PRACTICE IN COUNTRY
 PROJECT: #5690
 DATE ISSUED: MAY 2017
 REVISIONS:
 SHEET NUMBER **M-2**

Z:\Projects\Zambia\5690 Salvation Army Infrastructure Study\Drawings\Site\M-C1 Proposed Site Growth Plan 5690.dwg, Proposed future site, 5/4/2017 11:02:58 AM, PDFCreator

Z:\Projects\Zambia\5690 Salvation Army Infrastructure Study\Drawings\Site\M-C2 Site Survey 5690.dwg, Water Distribution, 5/3/2017 4:46:01 PM, PDFCreator

LEGEND	
SYMBOL	DESCRIPTION
---	UNDERGROUND WATER DISTRIBUTION PIPE
(BH)	BOREHOLE
(WT)	WATER STORAGE TANKS

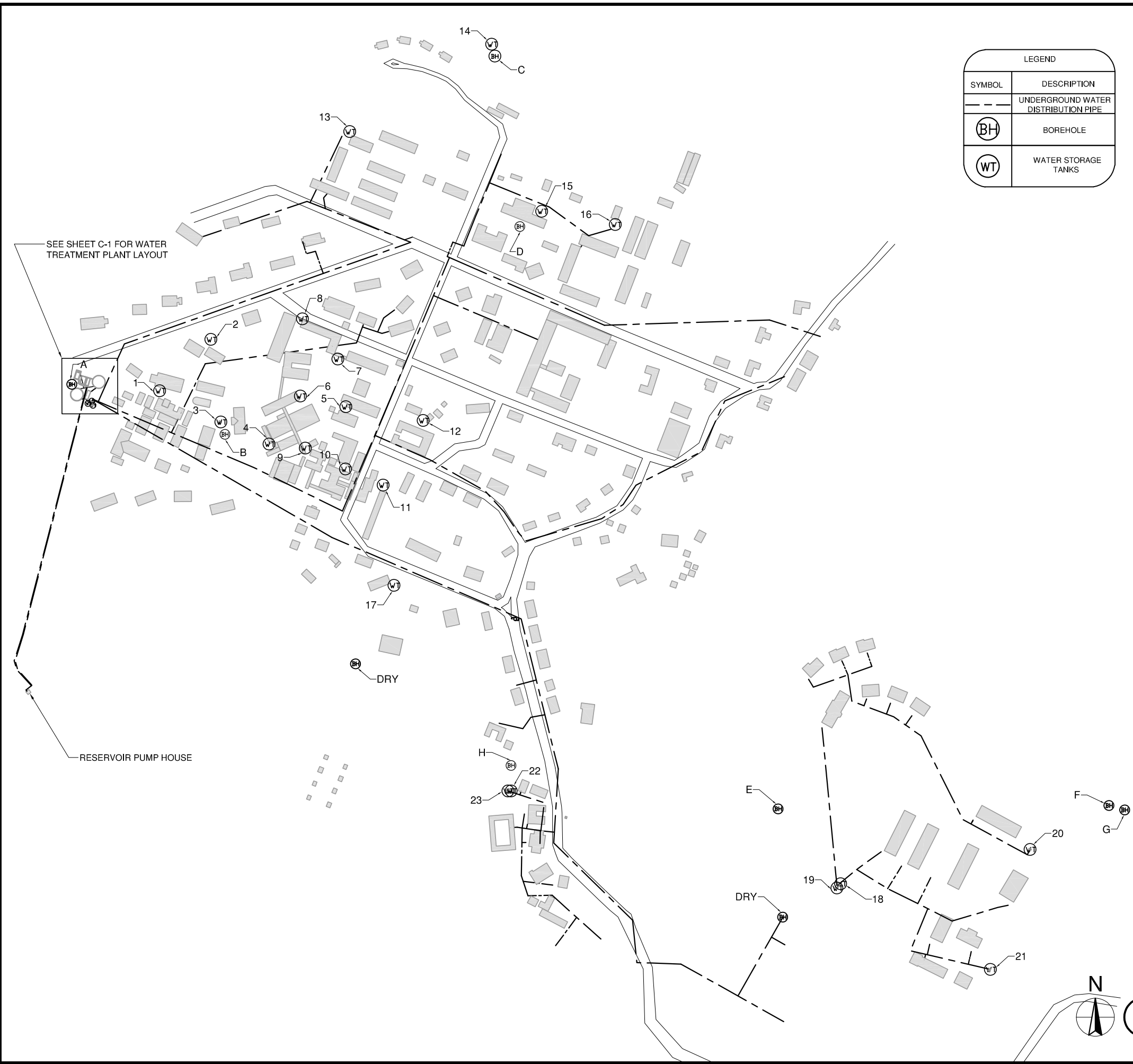
BOREHOLE LEGEND	
LETTER	CONDITION
A	FUTURE
B	CONTAMINATED
C	AGRICULTURAL
D	CONTAMINATED
E	ACTIVE
F	ACTIVE
G	ACTIVE
H	CONTAMINATED

NOTE: ALL ACTIVE BOREHOLES HAVE SUBMERSIBLE PUMPS. SECONDARY SCHOOL BOREHOLE D HAS HAND PUMP

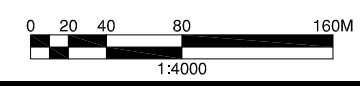
WATER TANK SCHEDULE					
NUMBER	VOL(m³)	ACTIVE (Y/N)	NUMBER	VOL(m³)	ACTIVE (Y/N)
1	10	Y	14	5	Y
2	5	N	15	5	Y
3	8	Y	16	5	Y
4	5	N	17	2	Y
5	1	Y	18	10	Y
6	8	N	19	10	Y
7	3	Y	20	8	Y
8	2	Y	21	10	Y
9	2	N	22	8	Y
10	5	Y	23	8	Y
11	5	Y	24	10	Y
12	1	N	25	10	Y
13	5	Y	26	10	Y

NOTE: SEE APPENDIX 3 IN REPORT FOR MORE INFORMATION ON TANKS

- NOTES
1. LOCATION AND SIZING OF BUILDING FOOTPRINTS ARE NOT EXACT, THEY WERE REFERENCED FROM A GOOGLE EARTH IMAGE DATED 2016.
 2. DRAWING MAY NOT INCLUDE ALL BUILDING FEATURES.
 3. WATER PIPE LAYOUTS SHOWN ARE BASED ON INPUT FROM CHIKANKATA STAFF AND FIELD OBSERVATIONS FROM EMI SURVEYORS. NOT ALL INFORMATION WAS FIELD VERIFIABLE.
 4. THIS PLAN DOES NOT SHOW ALL WATER LINES AND BUILDING SERVICE CONNECTIONS. ADDITIONAL DETERMINATION OF PIPE LOCATIONS AND SIZES IS REQUIRED.



1 EXISTING WATER DISTRIBUTION PLAN
1:4000



CHIKANKATA SALVATION ARMY INFRASTRUCTURE STUDY

**CHIKANKATA MISSION, ZAMBIA
EXISTING WATER DISTRIBUTION PLAN**

CONCEPTUAL DRAWINGS NOT FOR CONSTRUCTION

LOCAL REGULATIONS MAY REQUIRE DRAWINGS TO BE FINALIZED BY AN ARCHITECT/ENGINEER LICENSED TO PRACTICE IN COUNTRY

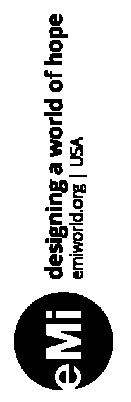
PROJECT: #5690

DATE ISSUED: MAY 2017

REVISIONS:

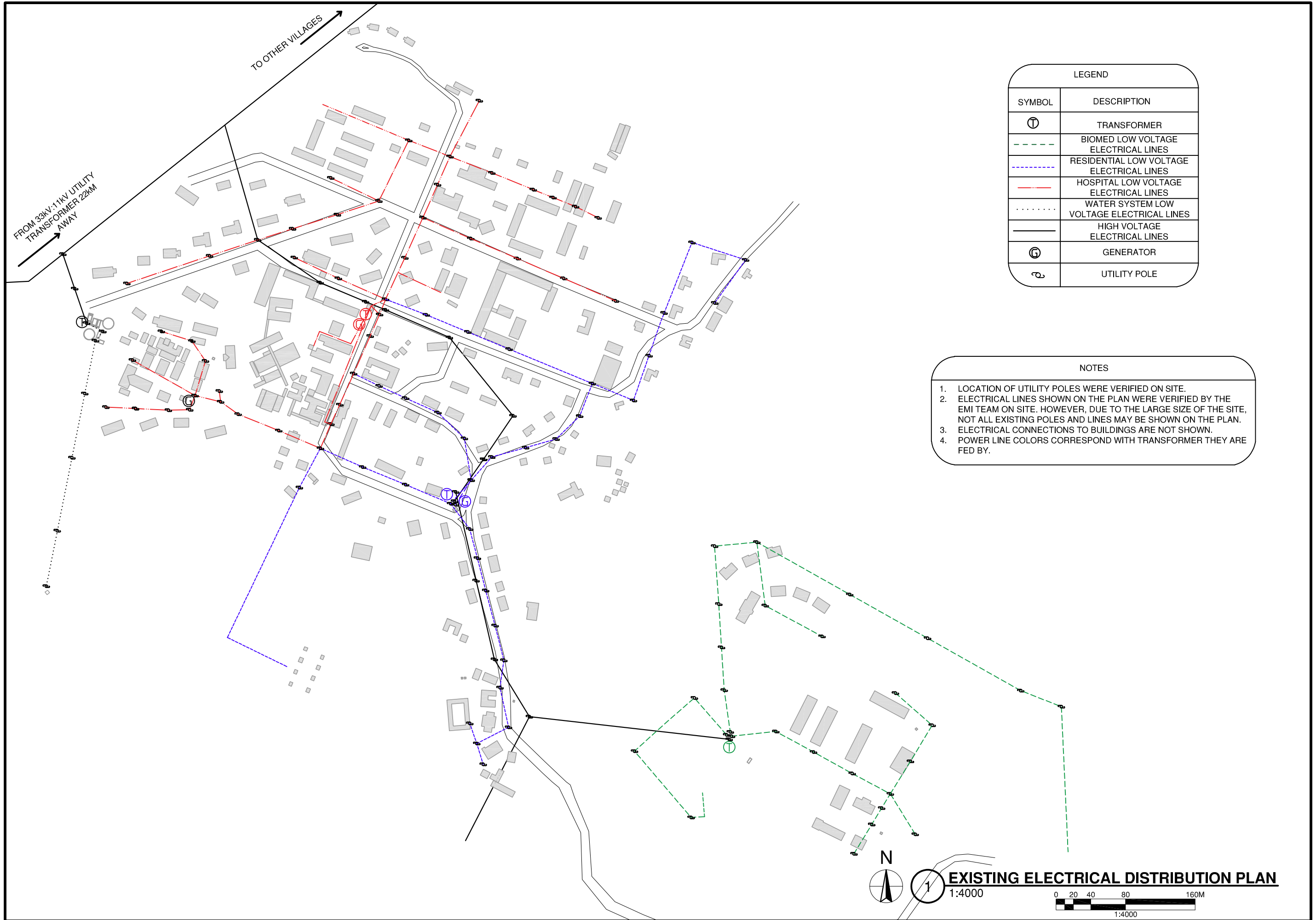
SHEET NUMBER

C-0



designing a world of hope

Z:\Projects\Zambia\5690 Salvation Army Infrastructure Study\Drawings\Site\M-C2 Site Survey 5690.dwg, Existing Electrical, 5/2/2017 4:52:00 PM, PDFCreator



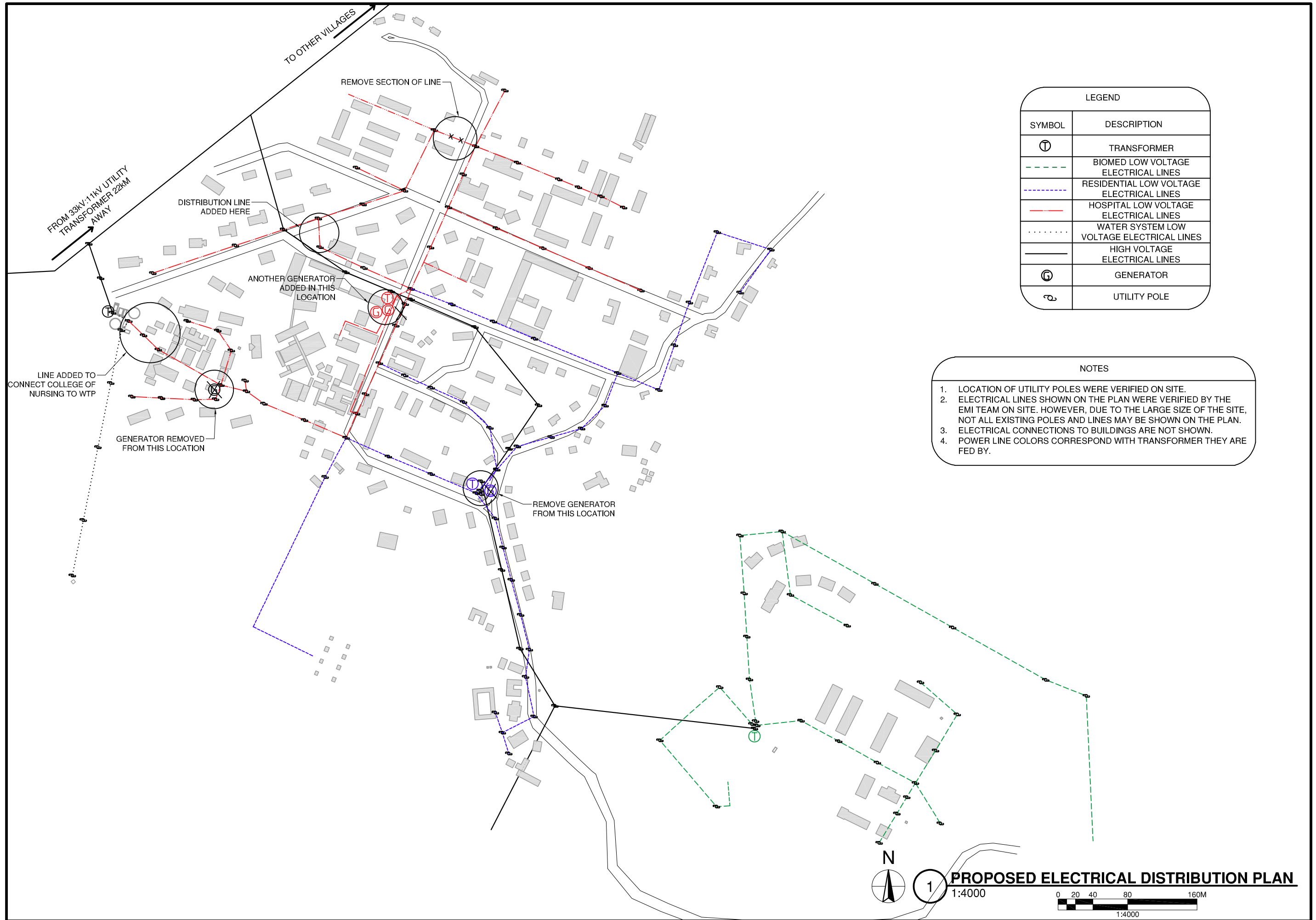
CHIKANKATA SALVATION ARMY INFRASTRUCTURE STUDY
CHIKANKATA MISSION, ZAMBIA
EXISTING ELECTRICAL DISTRIBUTION PLAN

CONCEPTUAL DRAWINGS NOT FOR CONSTRUCTION
LOCAL REGULATIONS MAY REQUIRE DRAWINGS TO BE FINALIZED BY AN ARCHITECT/ENGINEER LICENSED TO PRACTICE IN COUNTRY

PROJECT: #5690
DATE ISSUED: MAY 2017
REVISIONS:

SHEET NUMBER **E-0**

Z:\Projects\Zambia\5690 Salvation Army Infrastructure Study\Drawings\Site\M-C2 Site Survey 5690.dwg, Proposed Future Electrical, 5/3/2017 4:52:29 PM, PDFCreator



LEGEND	
SYMBOL	DESCRIPTION
⊕	TRANSFORMER
---	BIOMED LOW VOLTAGE ELECTRICAL LINES
---	RESIDENTIAL LOW VOLTAGE ELECTRICAL LINES
---	HOSPITAL LOW VOLTAGE ELECTRICAL LINES
---	WATER SYSTEM LOW VOLTAGE ELECTRICAL LINES
---	HIGH VOLTAGE ELECTRICAL LINES
⊕	GENERATOR
⊕	UTILITY POLE

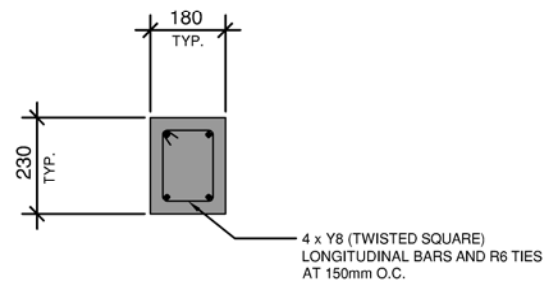
- NOTES
1. LOCATION OF UTILITY POLES WERE VERIFIED ON SITE.
 2. ELECTRICAL LINES SHOWN ON THE PLAN WERE VERIFIED BY THE EMI TEAM ON SITE. HOWEVER, DUE TO THE LARGE SIZE OF THE SITE, NOT ALL EXISTING POLES AND LINES MAY BE SHOWN ON THE PLAN.
 3. ELECTRICAL CONNECTIONS TO BUILDINGS ARE NOT SHOWN.
 4. POWER LINE COLORS CORRESPOND WITH TRANSFORMER THEY ARE FED BY.

CHIKANKATA SALVATION ARMY INFRASTRUCTURE STUDY
CHIKANKATA MISSION, ZAMBIA
PROPOSED ELECTRICAL DISTRIBUTION PLAN

CONCEPTUAL DRAWINGS NOT FOR CONSTRUCTION
LOCAL REGULATIONS MAY REQUIRE DRAWINGS TO BE FINALIZED BY AN ARCHITECT/ENGINEER LICENSED TO PRACTICE IN COUNTRY

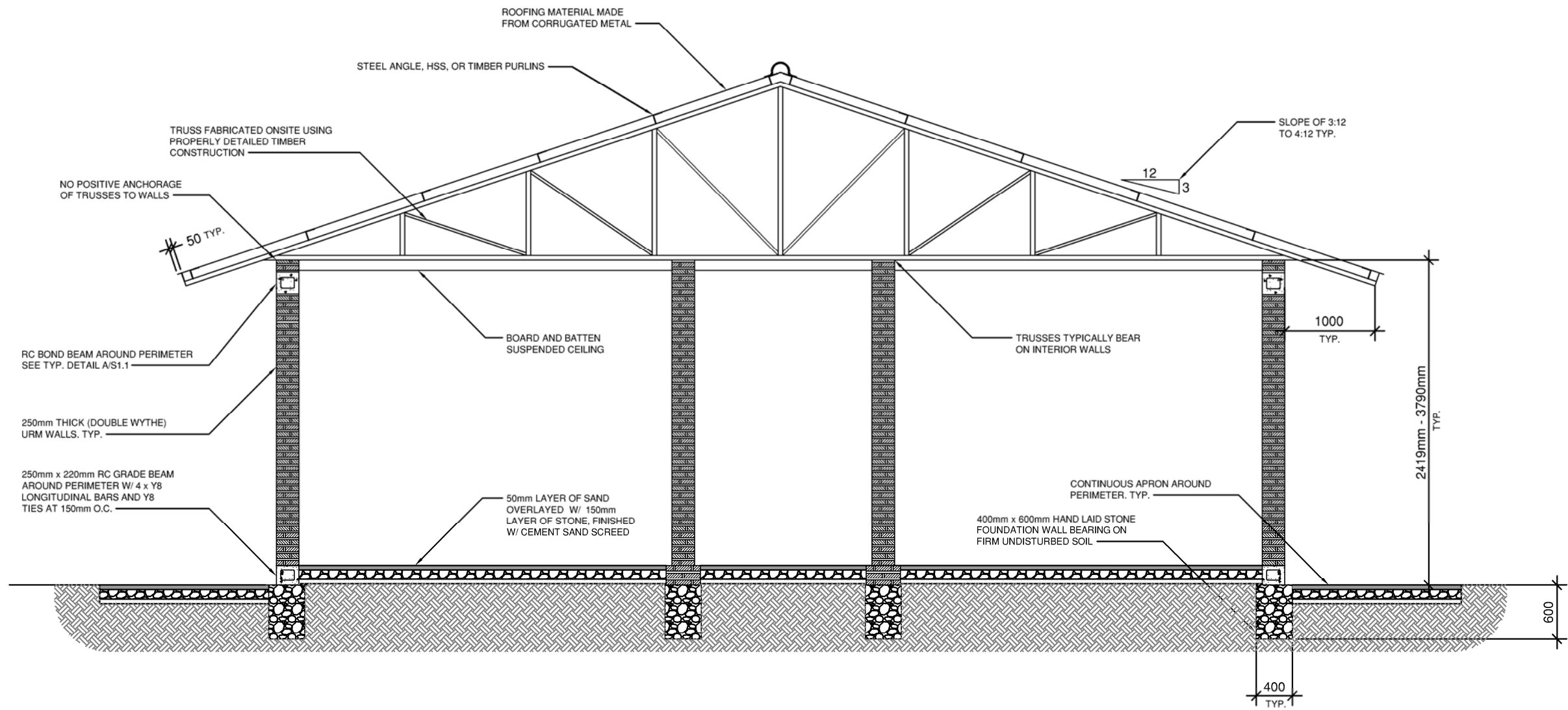
PROJECT: #5690
 DATE ISSUED: MAY 2017
 REVISIONS:

SHEET NUMBER **E-0.1**



1 TYPICAL BOND BEAM SECTION
NOT TO SCALE

- NOTES
1. TOP AND BOTTOM CHORDS OF TRUSSES SHOULD BE CONSTRUCTED USING TWO 2 x 6in LUMBER MEMBERS.
 2. DIAGONALS AND PURLINS SHOULD BE CONSTRUCTED USING TWO 2 x 4in LUMBER MEMBERS.
 3. TIMBER MATERIALS SHOULD BEAR ON TREATED OR METAL PLATE; TIMBER MUST NOT MAKE DIRECT CONTACT WITH MASONRY OR CONCRETE.



2 TYPICAL STRUCTURAL BUILDING SECTION
NOT TO SCALE

CONCEPTUAL DRAWINGS NOT FOR CONSTRUCTION
LOCAL REGULATIONS MAY REQUIRE DRAWINGS TO BE FINALIZED BY AN ARCHITECT/ENGINEER LICENSED TO PRACTICE IN COUNTRY

PROJECT: #5690

DATE ISSUED: MAY 2017

REVISIONS:

SHEET NUMBER S-0