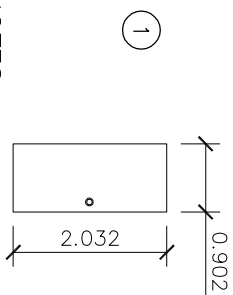
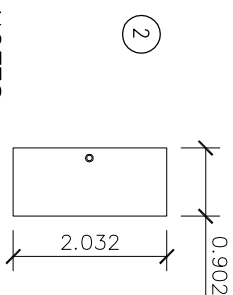


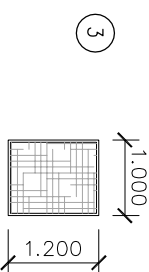
**DOOR SCHEDULE**



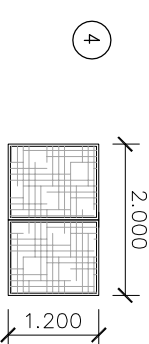
- NOTES:
1. RIGHT-HAND DOOR WITH WOOD DOOR FRAME FOR 100mm THICK WALL
  2. USE APPROPRIATE LOCK AND HINGES TO ENSURE SECURE STORAGE
  3. (1) REQUIRED



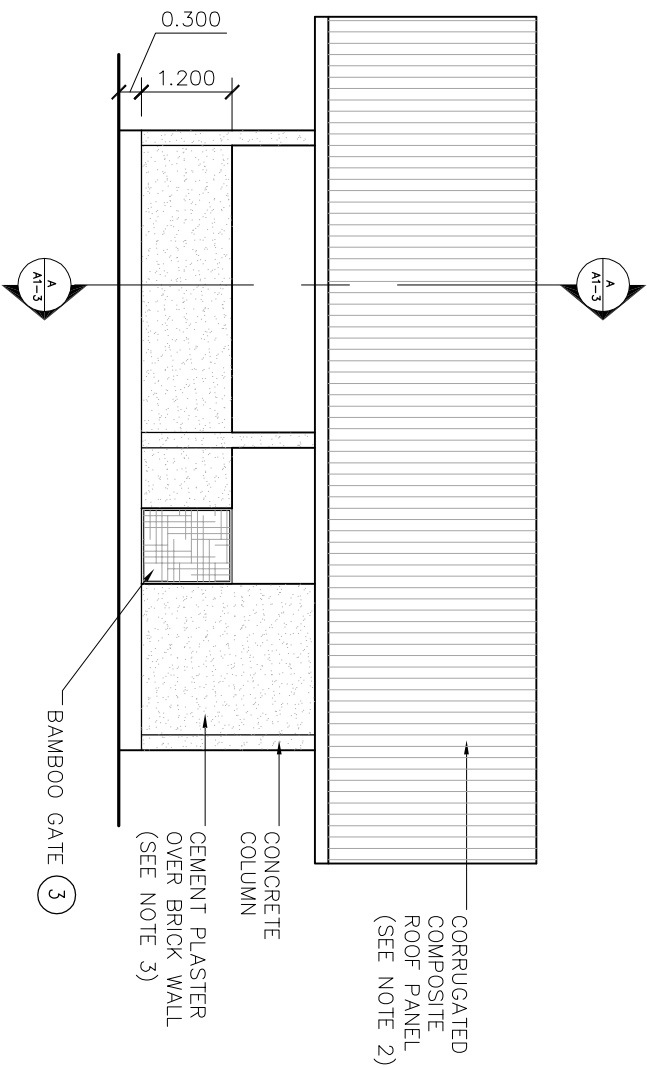
- NOTES:
1. LEFT-HAND DOOR WITH WOOD DOOR FRAME FOR 100mm THICK WALL
  2. USE APPROPRIATE LOCK AND HINGES TO ENSURE SECURE STORAGE
  3. (1) REQUIRED



- NOTES:
1. BAMBOO OR SIMILAR WITH WOOD STILES ATTACHED TO WALL
  2. (2) REQUIRED

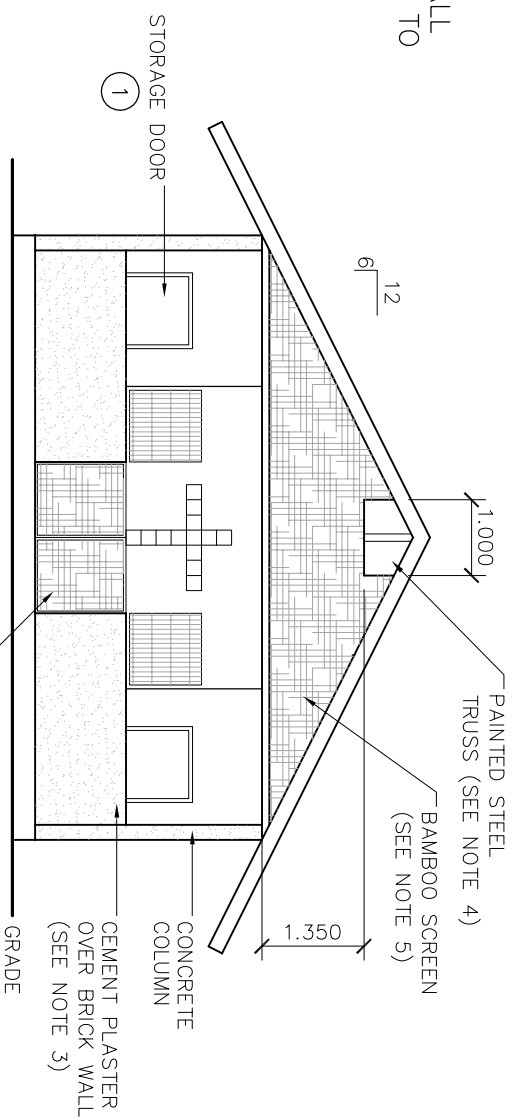


- NOTES:
1. BAMBOO OR SIMILAR DOUBLE GATE
  2. (1) REQUIRED



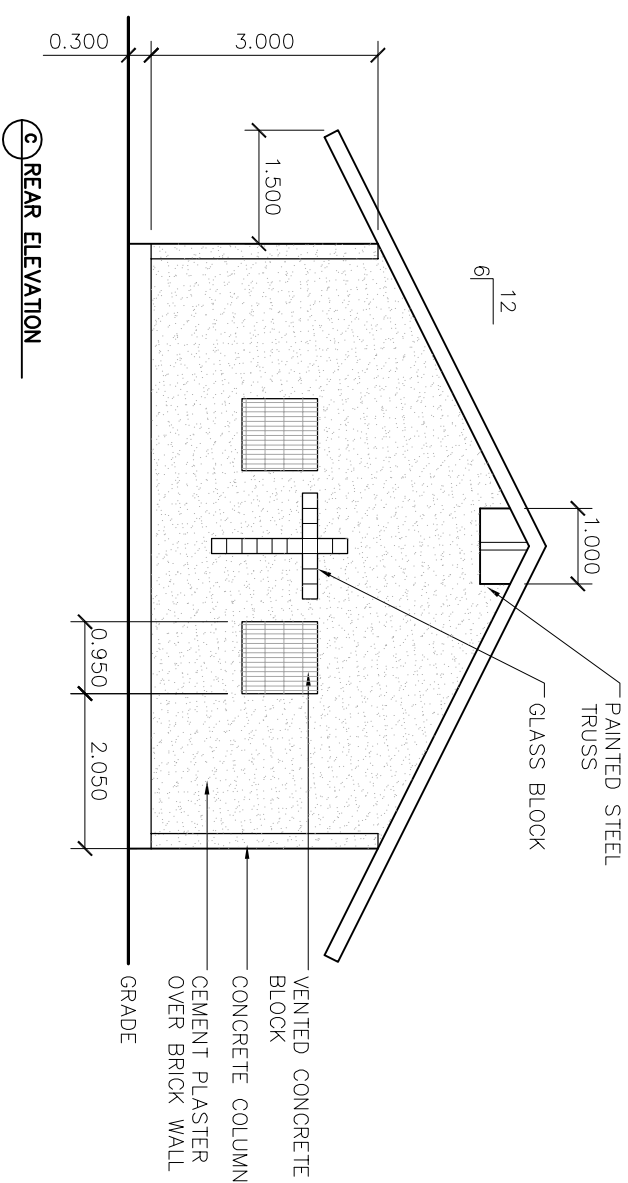
**(A) SIDE ELEVATION**

- NOTES:
1. ALL DIMENSIONS IN METERS
  2. SEE SHEET A1-3 FOR ROOFING INFORMATION AND DETAILS
  3. SEE SHEET A1-3 FOR WALL DETAILS
  4. SEE STRUCTURAL DRAWINGS FOR STEEL SIZES



**(B) FRONT ELEVATION**

- NOTES:
4. SCREEN TO BE TYPICAL BAMBOO WALL MATERIAL ATTACHED TO STEEL TRUSS



**(C) REAR ELEVATION**

**THAILAND AMBASSADORS OF CHRIST  
VILLAGE CHURCH 8m x 8m OPTION  
ELEVATIONS**



*designing a world of hope*  
engineering ministries international  
130 East Kiowa Street, Suite 200, Colorado Springs, CO 80903  
phone: 719/633-2078 fax: 719/633-2970 www.emiusa.org

date issued:  
DRAFT  
NOV 01, 2004

project:  
5363

scale:  
1:100

sheet number  
A1-2

**A1 ELEVATIONS**  
1:100